

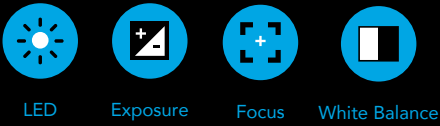
Update Release

WRIST CAMERA

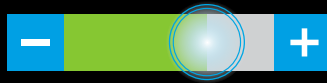


IMPROVED VISION CONTROL

- FULL CONTROL ON ALL SETTINGS

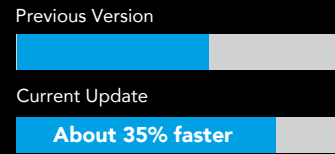


- TOUCH SENSITIVE SLIDERS



A faster way to control your settings with a single touch

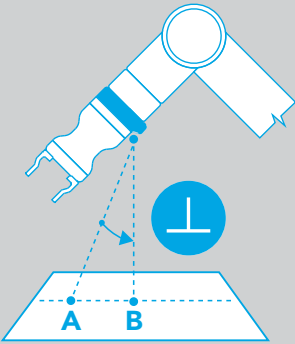
- FASTER IMAGE REFRESH SPEED



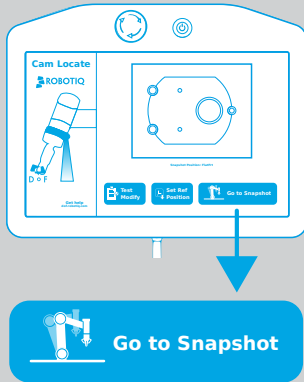
For more reactive feedback on object position & camera settings adjustments

NEW FEATURES

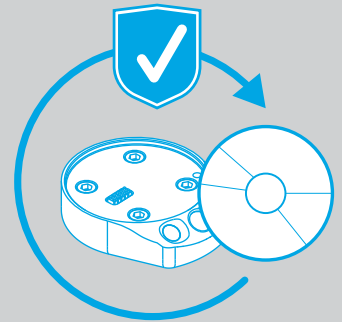
- 1 AUTOMATIC COPLANAR AND CENTERED ALIGNMENT WITH WORKSPACE



- 2 NEW GO TO SNAPSHOT POSITION BUTTON FOR FASTER PROGRAMMING



- 3 IMPROVED ROBUSTNESS OVER MILLIONS OF CYCLES



START PRODUCTION FASTER